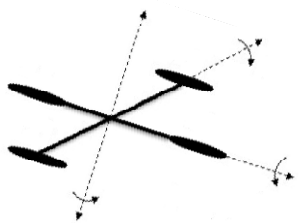
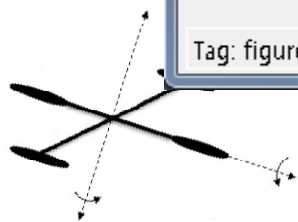
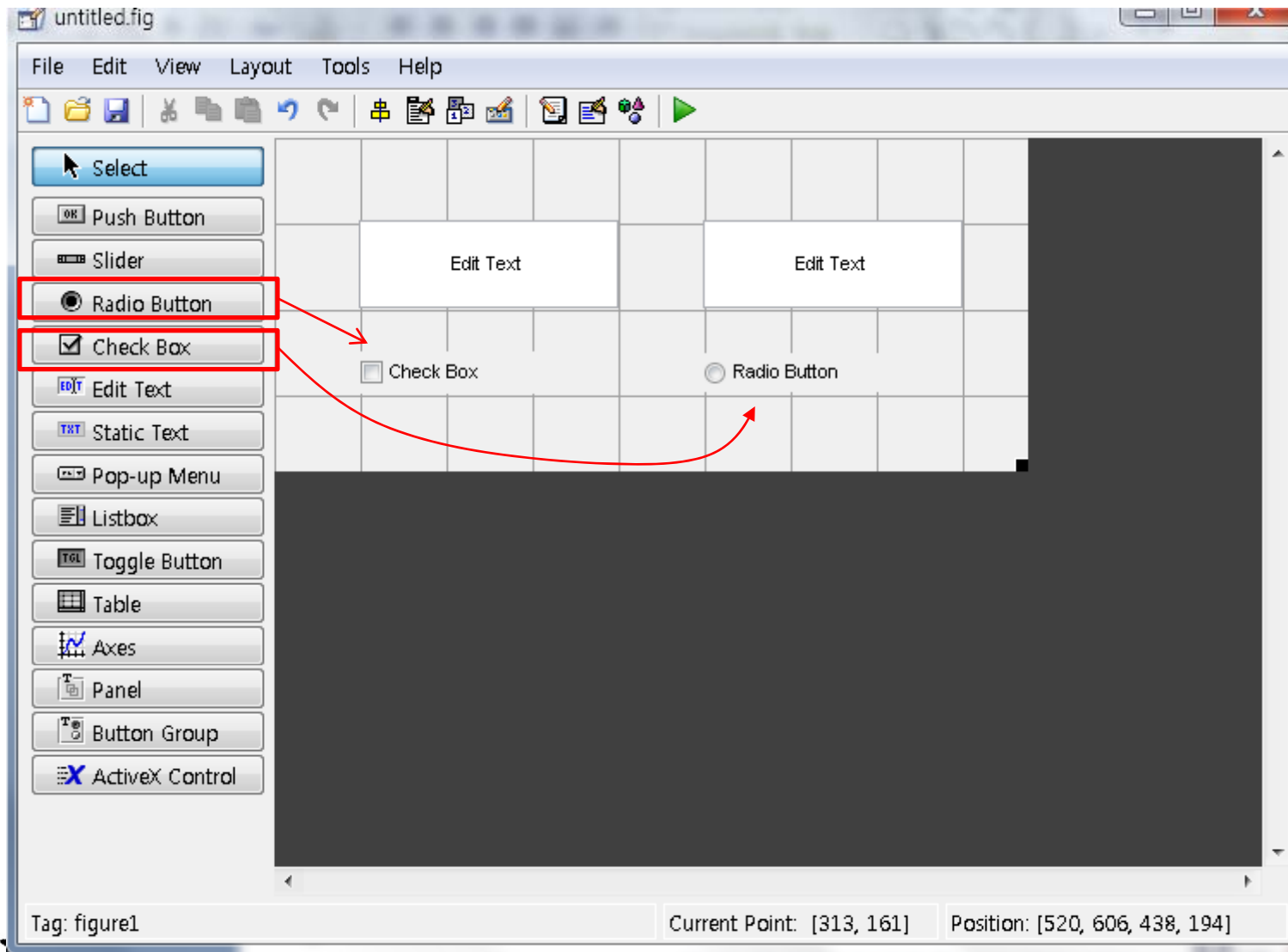
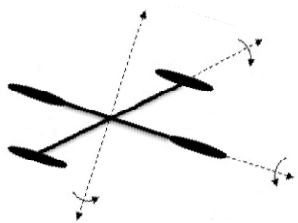
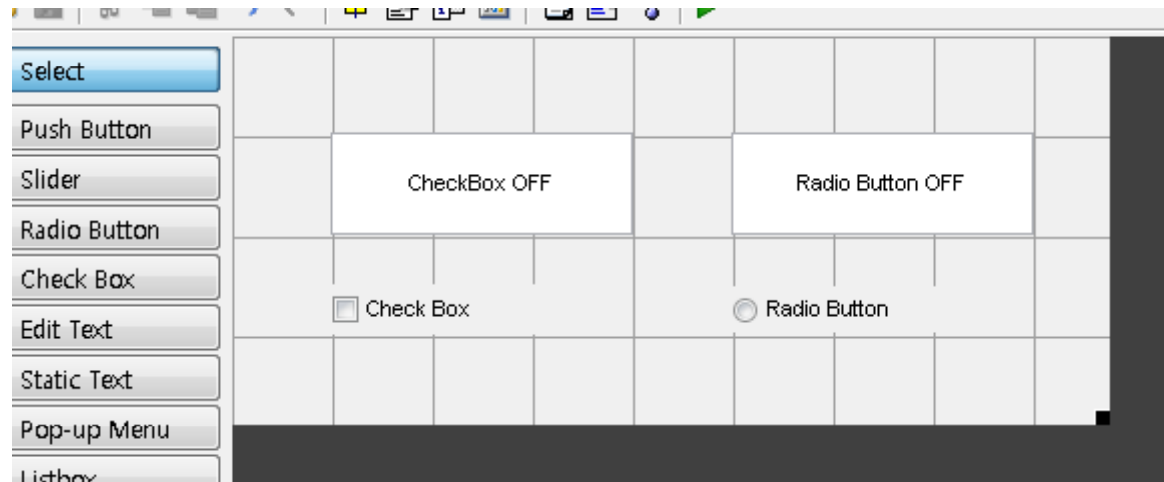

MATLAB

GUI 기초 – Check Box, Radio Button





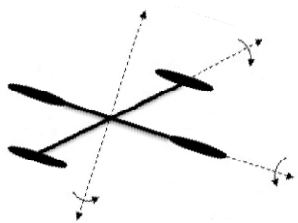


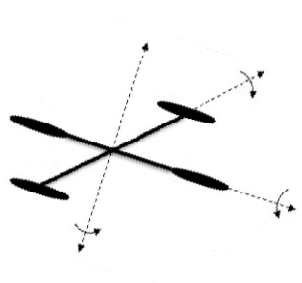
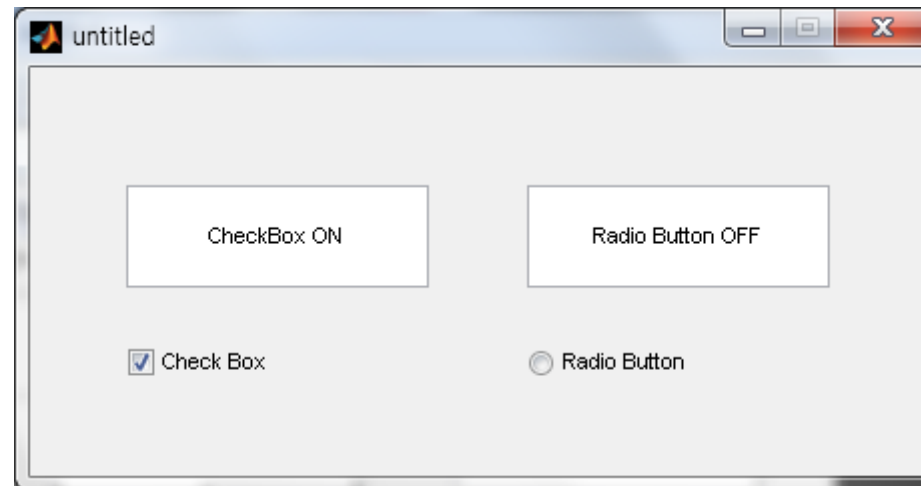
```
function checkbox1_Callback(hObject, eventdata, handles)
```

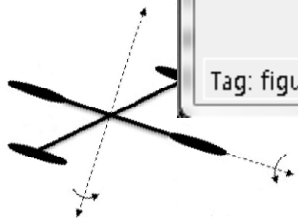
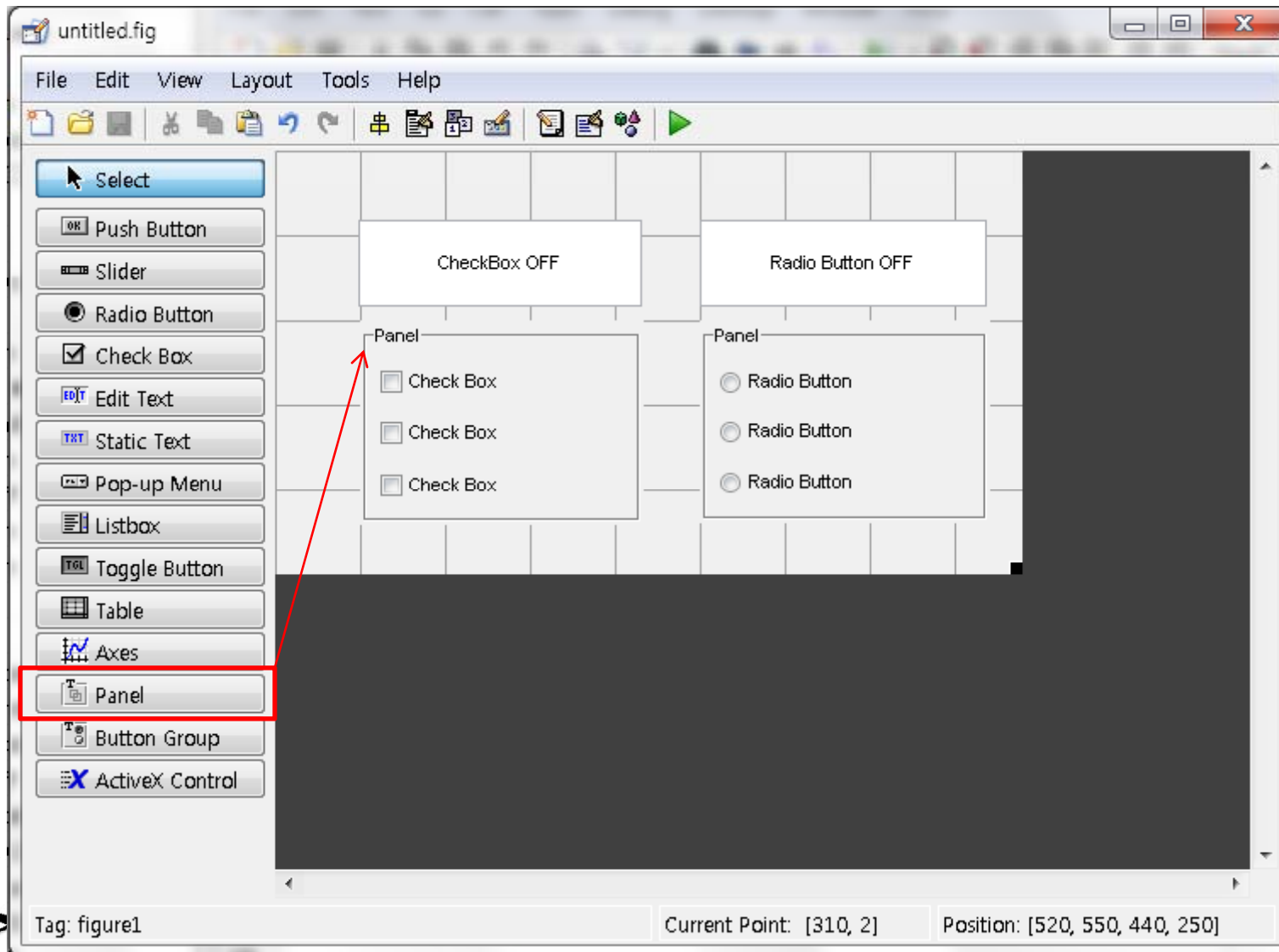
```
if (get(handles.checkbox1,'Value'))  
    set(handles.edit1, 'String', 'CheckBox ON')  
else  
    set(handles.edit1, 'String', 'CheckBox OFF')  
end
```

```
function radiobutton1_Callback(hObject, eventdata, handles)
```

```
if (get(handles.radiobutton1,'Value'))  
    set(handles.edit2, 'String', 'Radio Button ON')  
else  
    set(handles.edit2, 'String', 'Radio Button OFF')  
end
```

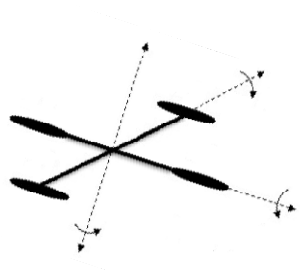


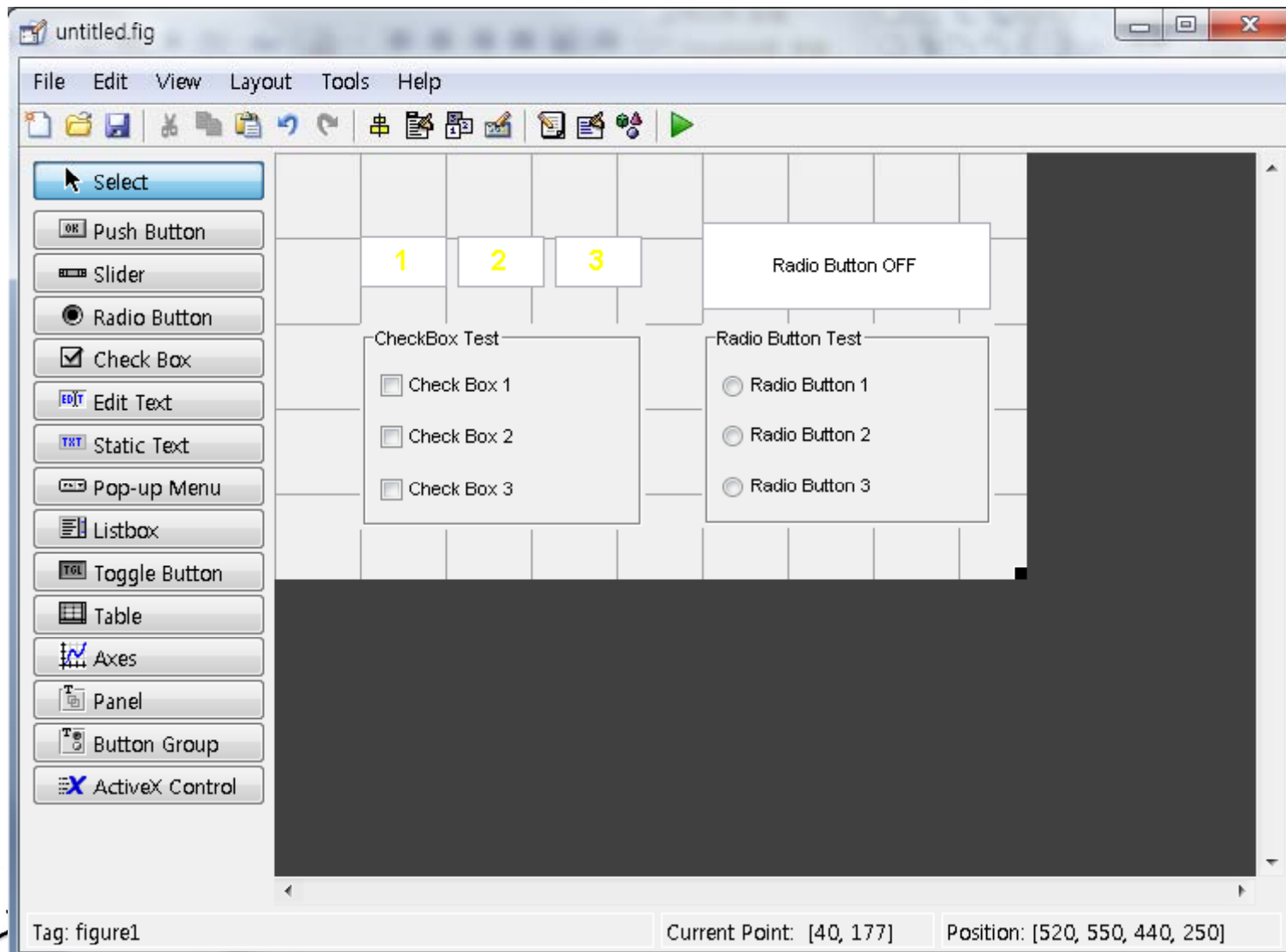






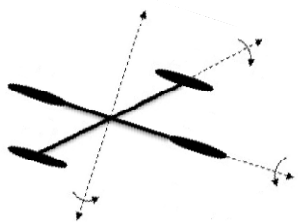
Position	[9.8 2.154 33.4 9.308]
ResizeFcn	
SelectionHighlight	on
ShadowColor	
Tag	uipanel1
Title	Panel
TitlePosition	lefttop
UIContextMenu	<None>
Units	characters





```
function checkbox1_Callback(hObject, eventdata, handles)

if (get(handles.checkbox1,'Value'))
    set(handles.edit3, 'BackgroundColor', 'r')
else
    set(handles.edit3, 'BackgroundColor', 'w')
end
```



```
function radiobutton1_Callback(hObject, eventdata, handles)

if (get(handles.radiobutton1, 'Value'))
    set(handles.radiobutton2, 'Value', 0)
    set(handles.radiobutton3, 'Value', 0)
    set(handles.edit2, 'String', 'Radio Button 1 ON')
else
    set(handles.edit2, 'String', 'Radio Button OFF')
end
```

